



Lithend Estates

Leading the way in student accommodation

Helpline: **01489 894 389**

or email office@lithend.com

Romsey Road

City, Winchester



Beds: 4

Postcode:
SO22 5BE



Overview

Fully furnished & gas centrally heated town house. 4 bedrooms each with bed, desk, chair, chest of drawers and wardrobe. Bathroom with bath, shower & WC. Fully fitted kitchen with dining area. Rear garden. Close to City and University

Facilities

Property Facilities

- Fully furnished
- Gas centrally heated
- Kitchen with dining area
- Back garden
- Broadband Internet Included
- Close to City & University

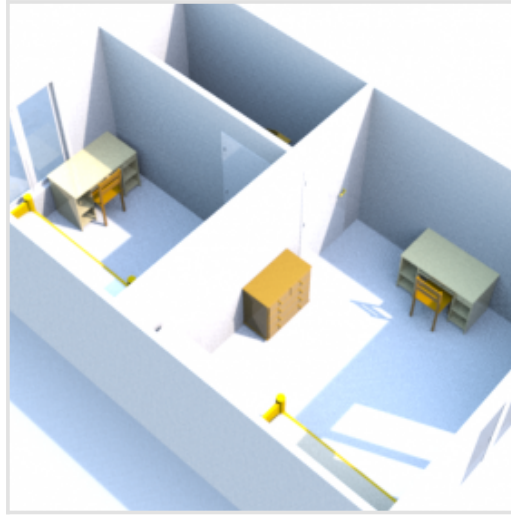
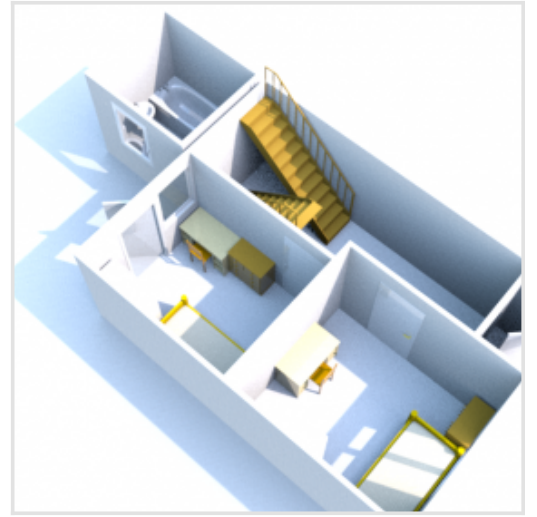
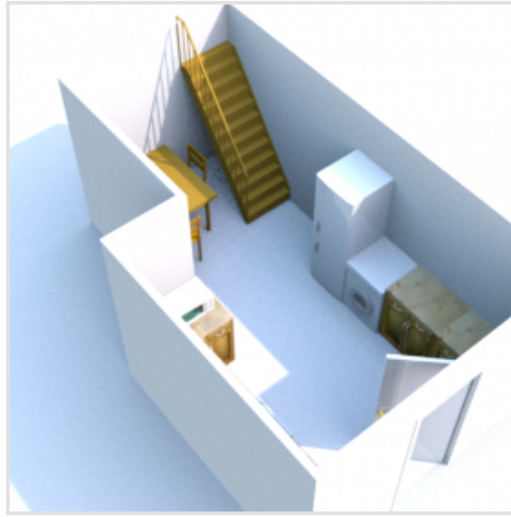
Kitchen Features

- Cooker
- Fridge/Freezer
- Microwave
- Washing machine
- Hoover
- Ironing board

Bedroom Features

- Bed
- Desk
- Chair
- Chest of drawers
- Wardrobe

Floor Plan



Gallery

