



Lithend Estates

Leading the way in student accommodation

Helpline: 01489 894 389

or email office@lithend.com

Stuart Crescent

Stanmore, Winchester

£POA

Beds: 4

Postcode:
SO22 4AS



Overview

Fully furnished & gas centrally heated. 4 bedrooms each with new bed, desk, chair, chest of drawers and wardrobe. 1st floor luxury new shower & WC. Additional ground floor WC. Fully fitted kitchen. Lounge with wooden flooring, new leather sofas and dining table. Front and rear gardens. Off road parking.

Facilities

Property Facilities

- Fully furnished
- Gas centrally heated
- Double glazed
- Living room
- Off road parking
- Front garden
- Back garden
- Broadband Internet Included

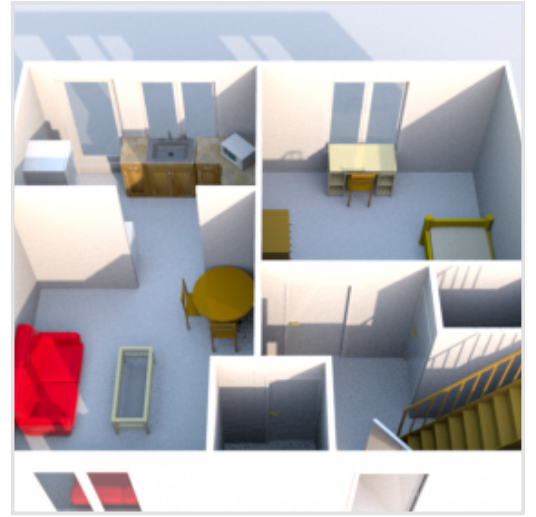
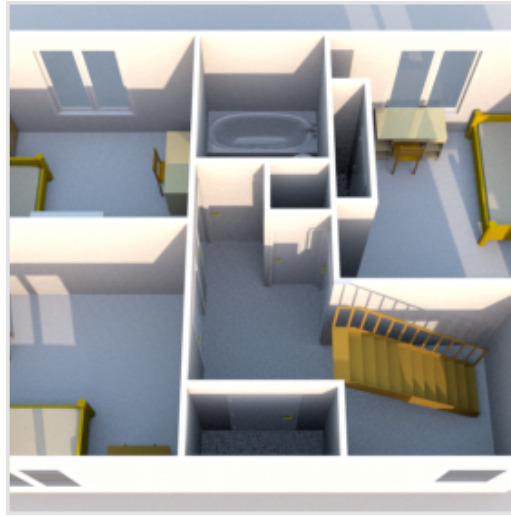
Kitchen Features

- Cooker
- Fridge/Freezer
- Microwave
- Washing machine
- Dishwasher
- Hoover
- Ironing board

Bedroom Features

- Bed
- Desk
- Chair
- Chest of drawers
- Wardrobe

Floor Plan



Gallery

