



Lithend Estates

Leading the way in student accommodation

Helpline: **01489 894 389**

or email office@lithend.com

Cromwell Road

Stanmore, Winchester

£**POA**

Beds: 4

Postcode:
SO22 4AG



Overview

Fully furnished & gas centrally heated. 4 bedrooms each with bed, desk, chair, chest of drawers and wardrobe. 1st floor bathroom with bath, shower & WC. Additional ground floor WC. Fully fitted kitchen. Lounge with wooden flooring and leather sofas and dining table and chairs. Front and rear gardens. Parking Spaces at front of property and at the back of the rear garden

Facilities

Property Facilities

- Fully furnished
- Gas centrally heated
- Double glazed
- Living room
- Front garden
- Back garden
- Broadband Internet Included

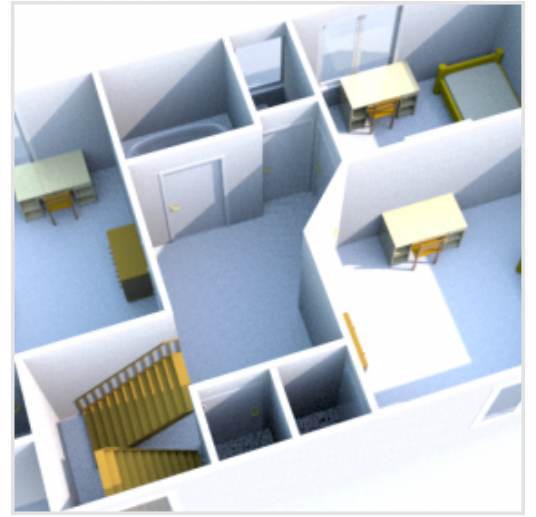
Kitchen Features

- Cooker
- Fridge/Freezer
- Microwave
- Washing machine
- Dishwasher
- Hoover
- Ironing board

Bedroom Features

- Bed
- Desk
- Chair
- Chest of drawers
- Wardrobe

Floor Plan



Gallery

