



Lithend Estates

Leading the way in student accommodation

Helpline: 01489 894 389

or email office@lithend.com

Cromwell Road

Stanmore, Winchester

£POA

Beds: 5

Postcode:
SO22 4AB



Overview

Fully furnished & gas centrally heated. 5 bedrooms each with New bed, desk, chair, chest of drawers and wardrobe. Bathroom with bath, shower & WC. Large fully fitted kitchen. Lounge with wooden floor, leather sofas and dining table. Front & rear gardens.

Facilities

Property Facilities

- Fully furnished
- Gas centrally heated
- Double glazed
- Living/dining room
- Front garden
- Back garden
- Broadband Internet Included

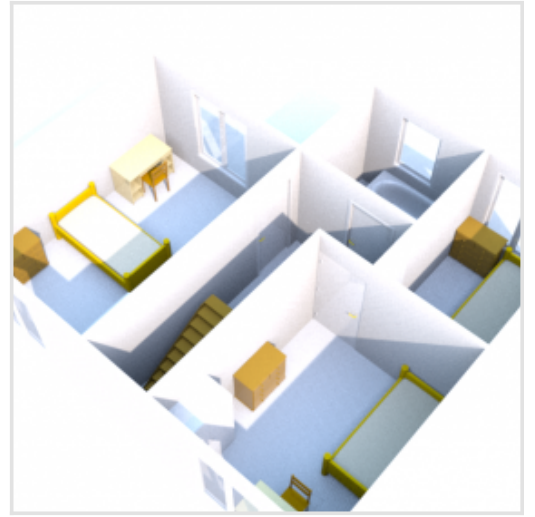
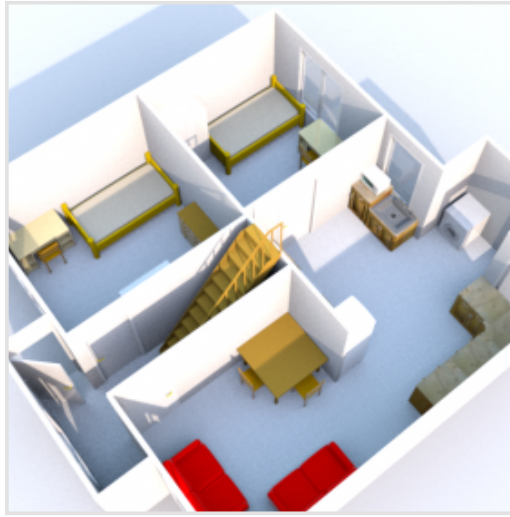
Kitchen Features

- Cooker
- Fridge/Freezer
- Microwave
- Washing machine
- Dishwasher
- Tumble dryer
- Hoover
- Ironing board

Bedroom Features

- Bed
- Desk
- Chair
- Chest of drawers
- Wardrobe

Floor Plan



Gallery

