



Lithend Estates

Leading the way in student accommodation

Helpline: 01489 894 389

or email office@lithend.com

Fivefields Road

Highcliffe, Winchester

£POA

Beds: 3

Postcode:
SO23 0QR



Overview

Fully furnished & gas centrally heated. 3 bedrooms each with new bed, desk, chair, chest of drawers and wardrobe. Ground floor new modern shower cubicle & WC. Fully fitted kitchen. Lounge with wooden floor, new sofas and dining table. Front & rear gardens. Off road parking.

Facilities

Property Facilities

- Fully furnished
- Gas centrally heated
- Double glazed
- Living/dining room
- Off road parking
- Front garden
- Back garden
- Free Broadband
- Current Energy Efficiency Rating C

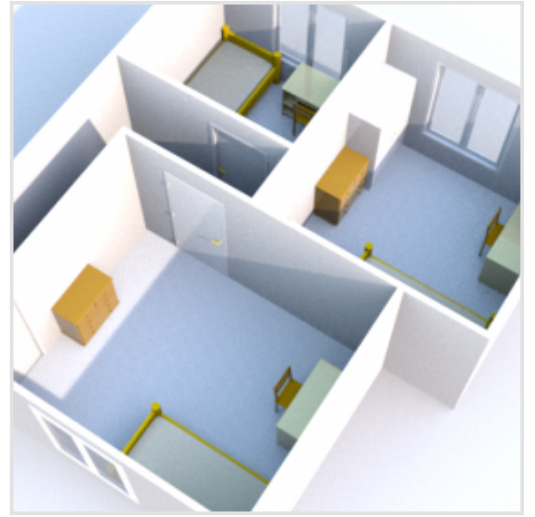
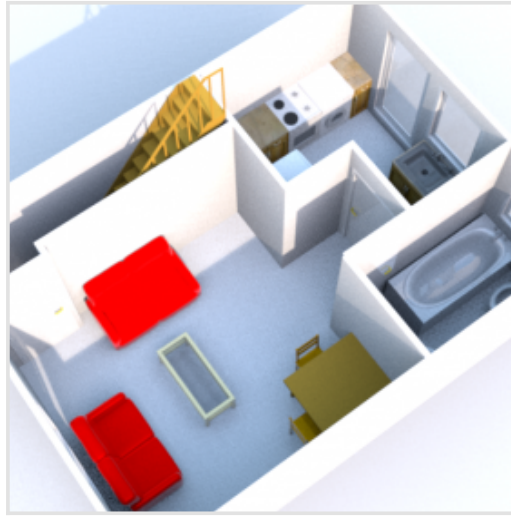
Kitchen Features

- Cooker
- Fridge/Freezer
- Microwave
- Dishwasher
- Washer/dryer
- Hoover
- Ironing board

Bedroom Features

- Bed
- Desk
- Chair
- Chest of drawers
- Wardrobe

Floor Plan



Gallery

