



Lithend Estates

Leading the way in student accommodation

Helpline: 01489 894 389

or email office@lithend.com

Taplings Road

Weeke, Winchester

£POA

Beds: 6

Postcode:
SO22 6HG



Overview

Fully furnished & gas centrally heated. Large 6 bed house. Each bedroom has a bed, desk, chair, chest of drawers and wardrobe. 1st floor bathroom with new modern shower cubicle & WC. Additional ground floor wet room with shower & WC. Large open plan kitchen/lounge with fully fitted kitchen, wooden floor, leather sofas and doors to garden. Front & rear gardens.

Facilities

Property Facilities

- HMO Accredited by Winchester City Council
- Fully furnished
- Gas centrally heated
- Double glazed
- Kitchen/living room
- Front garden
- Back garden
- Broadband Internet Included

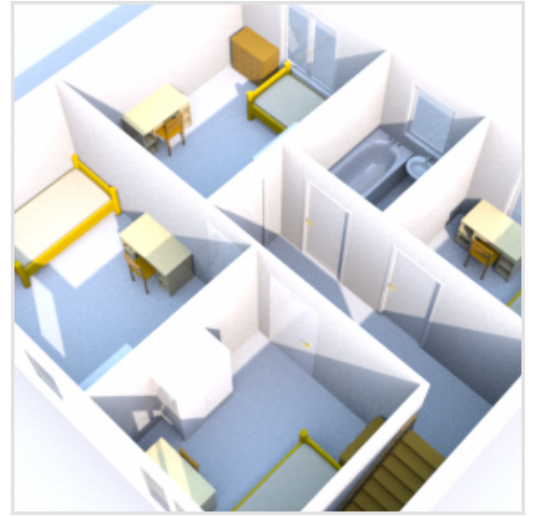
Kitchen Features

- Cooker
- Fridge/Freezer
- Microwave
- Washer/dryer
- Hoover
- Ironing board
- Dishwasher

Bedroom Features

- Bed
- Desk
- Chair
- Chest of drawers
- Wardrobe

Floor Plan



Gallery

