



## Lithend Estates

Leading the way in student accommodation

Helpline: 01489 894 389

or email [office@lithend.com](mailto:office@lithend.com)

### Stanmore Lane

Stanmore, Winchester

£POA

Beds: 4

Postcode:  
SO22 4BN



#### Overview

Fully furnished & gas centrally heated. 4 bedrooms each with new bed, desk, chair, chest of drawers and wardrobe. 1st floor bathroom with bath, shower & WC. Additional ground floor WC. Fully fitted kitchen. Lounge with wooden flooring and new sofas. Rear garden.

#### Facilities

##### Property Facilities

- Fully furnished
- Gas centrally heated
- Double glazed
- Living room
- Back garden
- Broadband Internet Included

##### Kitchen Features

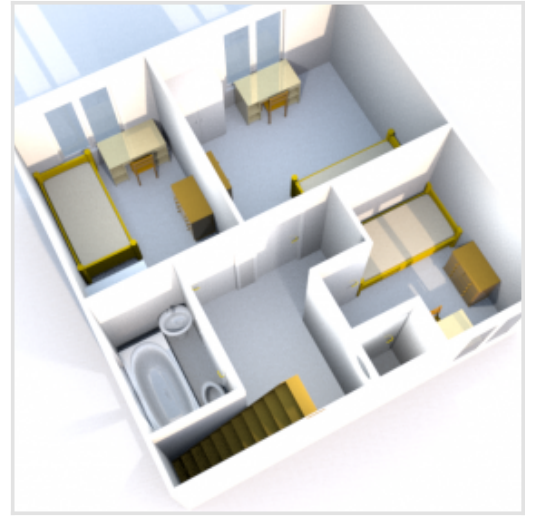
- Cooker
- Fridge/Freezer
- Microwave
- Washing machine
- Hoover
- Ironing board

##### Bedroom Features

- Bed
- Desk
- Chair
- Chest of drawers
- Wardrobe

---

## Floor Plan



---

## Gallery

