



Lithend Estates

Leading the way in student accommodation

Helpline: **01489 894 389**

or email office@lithend.com

Thurmond Crescent

Stanmore, Winchester

£**POA**

Beds: 4

Postcode:
SO22 4DH



Overview

Fully furnished & gas centrally heated. Next door to 2 other 4 bed houses, ideal for groups wanting to live near each other. 4 bedrooms each with new bed, desk, chair, chest of drawers and wardrobe. Bathroom with bath, shower & WC. Additional ground floor WC. Fully fitted kitchen. Lounge with wooden floor, new sofas, dining table and door to garden. Front and back gardens.

Facilities

Property Facilities

- Fully furnished
- Gas centrally heated
- Double glazed
- Living/dining room
- Front garden
- Back garden
- Broadband Internet Included

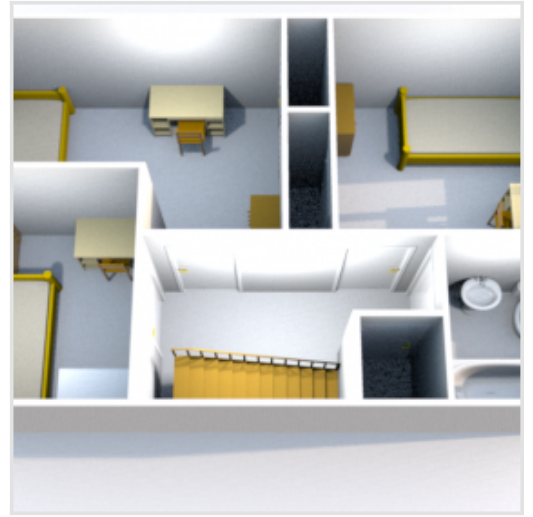
Kitchen Features

- Cooker
- Fridge/Freezer
- Microwave
- Washing machine
- Dishwasher
- Tumble dryer
- Hoover
- Ironing board

Bedroom Features

- Bed
- Desk
- Chair
- Chest of drawers
- Wardrobe

Floor Plan



Gallery

