



Lithend Estates

Leading the way in student accommodation

Helpline: 01489 894 389

or email office@lithend.com

Minden Way

Stanmore, Winchester

£POA

Beds: 5

Postcode:
SO22 4DS



Overview

Fully furnished & gas centrally heated. Large 5 bed house which shares a plot with 1 another 5 beds. 5 good sized bedrooms each with new double bed, desk, chair, chest of drawers and wardrobe. Fully fitted kitchen with dining table. Lounge with wooden floor, sofas and door to garden. Brand New 1st floor Shower room and WC. Additional ground floor WC. Front and back gardens.

Facilities

Property Facilities

- Fully furnished
- Gas centrally heated
- Double glazed
- Living room
- Kitchen/dining room
- Front garden
- Back garden
- Broadband Internet Included

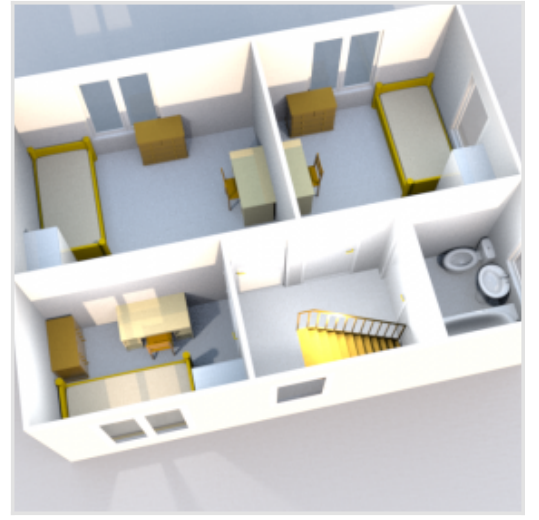
Kitchen Features

- Cooker
- Fridge/Freezer
- Microwave
- Washing machine
- Dishwasher
- Tumble dryer
- Hoover
- Ironing board

Bedroom Features

- Bed
- Desk
- Chair
- Chest of drawers
- Wardrobe

Floor Plan



Gallery

