



# Lithend Estates

Leading the way in student accommodation

Helpline: **01489 894 389**

or email [office@lithend.com](mailto:office@lithend.com)

## Thurmond Crescent

Stanmore, Winchester

£**POA**

Beds: 4

Postcode:  
SO22 4DH



### Overview

Fully furnished & gas centrally heated. Next door to 2 other 4 bed houses, ideal for groups wanting to live near each other. 4 bedrooms each with new bed, desk, chair, chest of drawers and wardrobe. New Modern shower & WC. Additional ground floor WC. Fully fitted kitchen. Lounge with wooden floor, new sofas and door to garden. Front and back gardens. Parking

### Facilities

#### Property Facilities

- Fully furnished
- Gas centrally heated
- Double glazed
- Living/dining room
- Back garden
- Broadband Internet Included

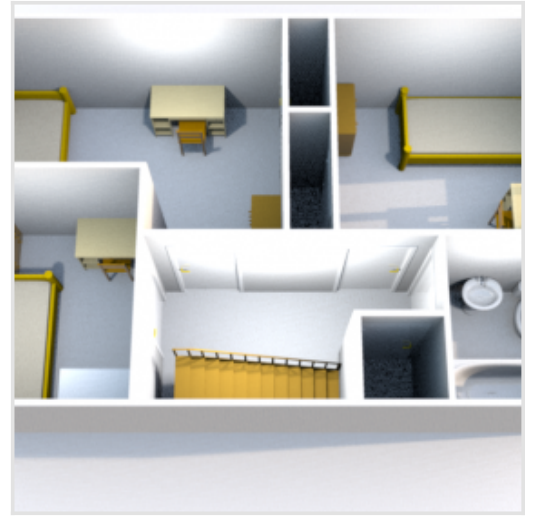
#### Kitchen Features

- Cooker
- Fridge/Freezer
- Microwave
- Washing machine
- Dishwasher
- Tumble dryer
- Hoover
- Ironing board

#### Bedroom Features

- Bed
- Desk
- Chair
- Chest of drawers
- Wardrobe

# Floor Plan



Gallery

