



Lithend Estates

Leading the way in student accommodation

Helpline: 01489 894 389

or email office@lithend.com

St Mary Street

Stanmore, Winchester

£POA

Beds: 8

Postcode:
SO22 4AQ



Overview

Fully furnished, gas centrally heated and double glazed. Large 8 bed house with similar size bedrooms all modern new furniture - 2 Modern shower rooms and separate toilets. Large fully fitted kitchen including dishwasher. Separate lounge with sofas, arm chair and laminate flooring. Large garden. Off road parking

Facilities

Property Facilities

- Fully furnished
- Gas centrally heated
- Double glazed
- Communal living room
- Off road parking
- Back garden
- Broadband Internet Included
- Current Energy Efficiency rating C

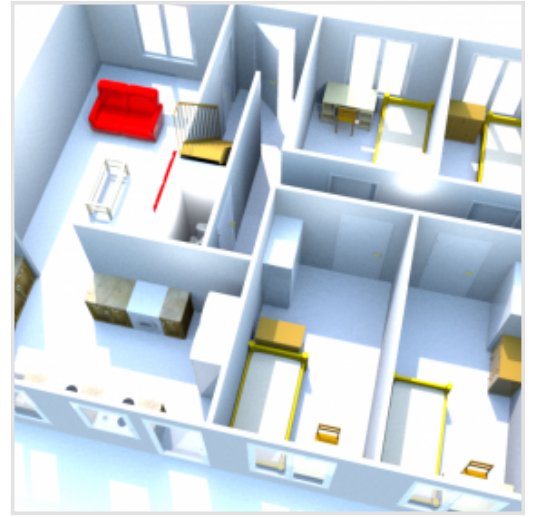
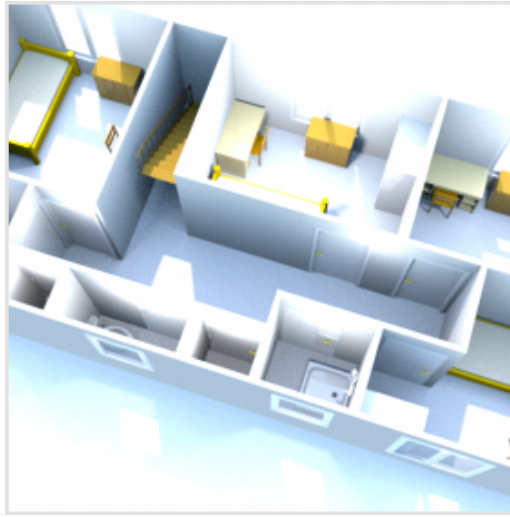
Kitchen Features

- 2 x Cookers
- 2 x Fridge/Freezers
- Washing machine
- Microwave
- Dishwasher
- Tumble dryer
- Hoover
- Ironing board

Bedroom Features

- Bed
- Desk
- Chair
- Chest of drawers
- Wardrobe

Floor Plan



Gallery

