



Lithend Estates

Leading the way in student accommodation

Helpline: **01489 894 389**

or email office@lithend.com

Battery Hill

Stanmore, Winchester

£**POA**

Beds: 5

Postcode:
SO22 4DD



Overview

Fully furnished, gas centrally heated and double glazed. Large fully fitted kitchen. Separate lounge with laminate floor and leather sofas. 1st floor bathroom with bath and shower. Separate WC. Good size bedrooms with new bed, desk, chair, chest of drawers and wardrobe. Front and rear gardens. Off road parking.

Facilities

Property Facilities

- Fully furnished
- Gas centrally heated
- Double glazed
- Communal living room
- Off road parking
- Front garden
- Back garden
- Broadband internet

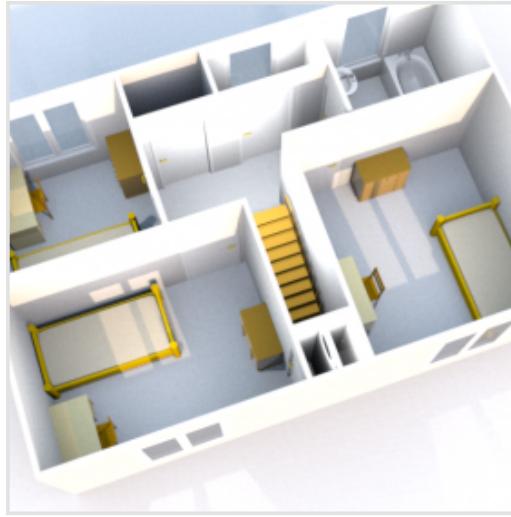
Kitchen Features

- Cooker
- Fridge/Freezer
- Washing machine
- Dishwasher
- Tumble dryer
- Microwave
- Hoover
- Ironing board

Bedroom Features

- Bed
- Desk
- Chair
- Chest of drawers
- Wardrobe

Floor Plan



Gallery

