



Lithend Estates

Leading the way in student accommodation

Helpline: **01489 894 389**

or email office@lithend.com

Fivefields Road

Highcliffe, Winchester

£**POA**

Beds: 4

Postcode:
SO23 0QN



Overview

Large semi detached house close to several other 4 bed houses. Ideal for groups wanting to live close to each other. Fully fitted kitchen. The communal lounge/diner is large and has wooden flooring, new sofas, coffee table, dining table and chairs. 4 bedrooms each with new bed, desk, chair, chest of drawers and wardrobe. 1st floor New Shower Cubicle and separate WC. There is a large garden and off road parking.

Facilities

Property Facilities

- Fully furnished
- Gas centrally heated
- Double glazed
- Lounge/diner
- Off road parking
- Front garden
- Back garden
- Broadband Internet Included
- Current Energy Efficiency Rating D

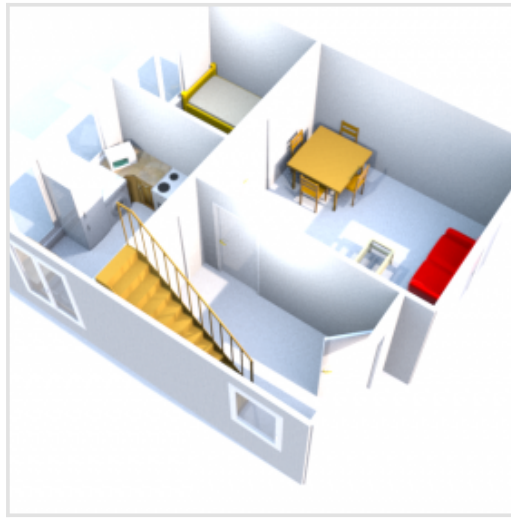
Kitchen Features

- Cooker
- Fridge/Freezer
- Dishwasher
- Washer/dryer
- Microwave
- Hoover
- Ironing board

Bedroom Features

- Bed
- Desk
- Chair
- Chest of drawers
- Wardrobe

Floor Plan



Gallery

